

www.sahg.org  
1775 12th Ave NW - Suite 102  
Issaquah, WA 98027

phone: 425.391.2300  
fax: 425.391.3090

## SAHG Staff

Ann Levine, Executive Director  
Sue Bliven, Director of Finance and Assets  
Jenn Daly, Director of Fund Development  
Eric Evans, Director of Housing Development  
Rachel Mathison, Director of Resident Services  
Meg Colombi, Accountant  
Sara COX, Fund Development Associate  
Marchelle Mertens, Development Associate  
Julie Strain, Accounting Associate  
Hester Winn, Office Administrator

## Advocating for Housing

SAHG's Board and staff have been making presentations to local church groups and professional organizations (Kiwanis, Rotary, etc.) to help community members better understand the need for affordable housing on the Eastside.

The presentations range from 10 - 45 minutes (depending on the need of the group) and cover both the spectrum of affordable housing and specifically what SAHG is doing to meet these needs on the Eastside. Some groups ask us to focus on something specific, such as Resident Services, to best fit with the audiences' needs and interests.

If you are a member of a church or community group that would benefit from learning more about affordable housing on the Eastside, please don't hesitate to contact Sara Cox at 425.391.2300 ext. 17 or by e-mail at [sarac@sahg.org](mailto:sarac@sahg.org).

## Financial Support

SAHG gratefully acknowledges the following gifts:

### Grants

\$ 20,000 over the next two years from **The Norcliffe Foundation** to support SAHG's general operating expenses.

\$ 5,000 from **Safeco Insurance Foundation** to support the expansion of SAHG's Resident Services Program.

\$ 3,000 from **Target** for the creation of a library at Rose Crest and expansion of SAHG's homework club this fall.

### Donations

In celebration of **Mary Jo Morrison's** 87th birthday from the Morrison family!



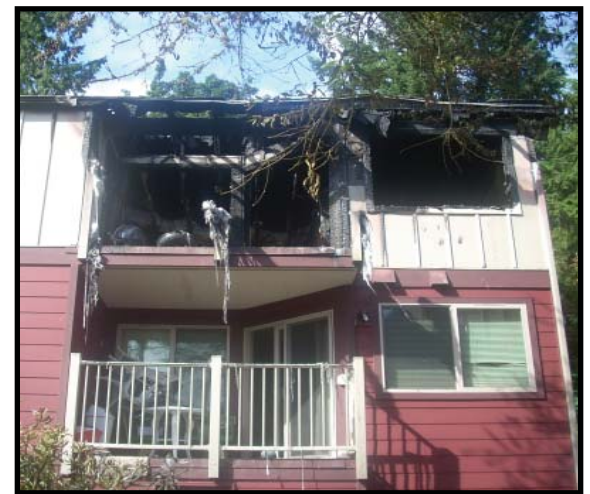
# St. Andrew's Housing Group

summer 2009

## Fire Damages Mine Hill Apartments

In the early morning of July 18, an accidental fire broke out at Mine Hill Apartments in Issaquah, causing at least \$170,000 in damage. The blaze completely destroyed the unit where the fire broke out, and fire, smoke and water significantly damaged two additional units. All of the residents escaped without injury, which firefighters credit to the smoke detectors for alerting residents.

The Red Cross has generously provided motel vouchers for the displaced residents. St. Andrew's Housing Group has moved the residents' personal property into storage and is working to get the units rehabilitated so the residents can return to them as soon as possible. Donations are being accepted to help the residents rebuild their lives. Gift cards or donations can be sent to SAHG. Please specify that your donation is for fire victims.



Fire damaged an upstairs unit at Mine Hill Apartments in Issaquah. Fire inspectors believe the fire was accidentally caused by a resident.

## Microsoft Interns host BBQ for SAHG Residents



Microsoft interns prepare for a day of fun at Rose Crest.

On July 10th, a group of 15 interns from Microsoft joined St. Andrew's Housing Group for a day of fun and food at Rose Crest, a 50-unit complex in the Talus Development of Issaquah. With excitement and passion, these volunteers led roughly 30 kids at Rose Crest through various activity stations throughout the day. Activities included a silly relay race, decorating canvas lunch bags, building and coloring balsa wood creations and creating pretty pencil pinwheels.

The residents remarked that it was so refreshing to have on-site activities that lent themselves to participation between kids and parents. This kind of community building and family strengthening is one of the foundational goals of SAHG's Resident Services Program, and is dependent on the faithful contributions of volunteers. Sincere thanks to the team at Microsoft who engaged the kids with their energy and enthusiasm without asking for anything in return.

## Wine Event with Habitat for Humanity of East King County

On July 30th, over 140 local community members gathered to support St. Andrew's Housing Group and Habitat for Humanity of East King County while enjoying some of Efesté's finest wines. Despite the record temperatures of the week, the energy in the room was refreshing. Guests heard from Executive Directors Ann Levine and Tom Granger as well as current SAHG resident Marina, who will be moving into a Habitat EKC home in just a few months. Many thanks to our sponsor, Sterling Savings Bank, and all who attended to show support for the work both organizations are doing to provide affordable housing options on the Eastside.



SAHG staff Marchelle Mertens, Julie Strain and Ann Levine enjoy a glass of wine with Klaas Nijhuis, Senior Planner with A Regional Coalition for Housing (ARCH).



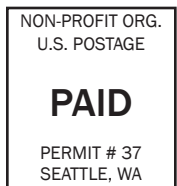
www.sahg.org  
1775 12th Ave NW - Suite 102  
Issaquah, WA 98027

phone: 425.391.2300  
fax: 425.391.3090

summer 2009

SAHG's ID # 94-3110312

Are you on Facebook? Become a fan of SAHG today!



*imagine*

Annual Dinner and Auction

*benefiting*

St. Andrew's Housing Group

save the date:

*Saturday,  
April 24, 2010*

[www.imaginehousing.org](http://www.imaginehousing.org)

## mission

St. Andrew's Housing Group is dedicated to improving the quality of life for people with limited incomes on King County's Eastside, empowering these families to succeed by providing housing and access to services while strengthening local communities and encouraging diversity.

## vision

St. Andrew's Housing Group will dramatically increase the affordable housing supply in every community it serves, be recognized as an innovator in the housing field, and successfully support each individual and family who calls our properties home.

## guiding principles

In everything we do, we will strive to:

- Transform our community, making immediate and long-term differences.
- Develop innovative solutions based on stability, integrity, and long-term viability.
- Partner with organizations and individuals to broaden our effectiveness.
- Engage the public in our work.

## board of directors

Marni Wright, *President* - GordonDerr LLP  
Jim Long, *Vice President* - Pinnacle Real Estate  
Jason Anderson, *Treasurer* - Deloitte  
Linda Bergam, *Secretary* - Newcastle Consulting  
Larry Abner - *Management Consultant*  
Lainey Alai Malo - *Michael Wong Insurance*  
Sterling Bentsen - *Community Volunteer*  
Eric Campbell - *CamWest Development, Inc.*  
Jeff Churchill - *City of Redmond*  
Paul Dressel - *Wells Fargo*  
Judy Gowdy - *J.C. Gowdy Interiors*  
Darel Harrison - *Barclay Dean*  
Joe Ingram - *Vets Edge*  
Jack Morrison - *Cisco Systems*  
Lucy Sannes - *Sannes & Associates, Inc.*